

# APPENDIX I

## How Gender and Family Friendly are Public Restrooms at the University of Illinois at Urbana-Champaign Campus?

An Evaluation of Eleven Major Campus Buildings Based on the Gender Equity Design Checklist.



A Report by the Provost's Gender Equity Council  
University of Illinois at Urbana-Champaign  
Co Chairs: Kathryn Anthony & Gale Summerfield  
Staff: Anita Kaiser & Kelly Sullivan

Date: May 9th, 2011

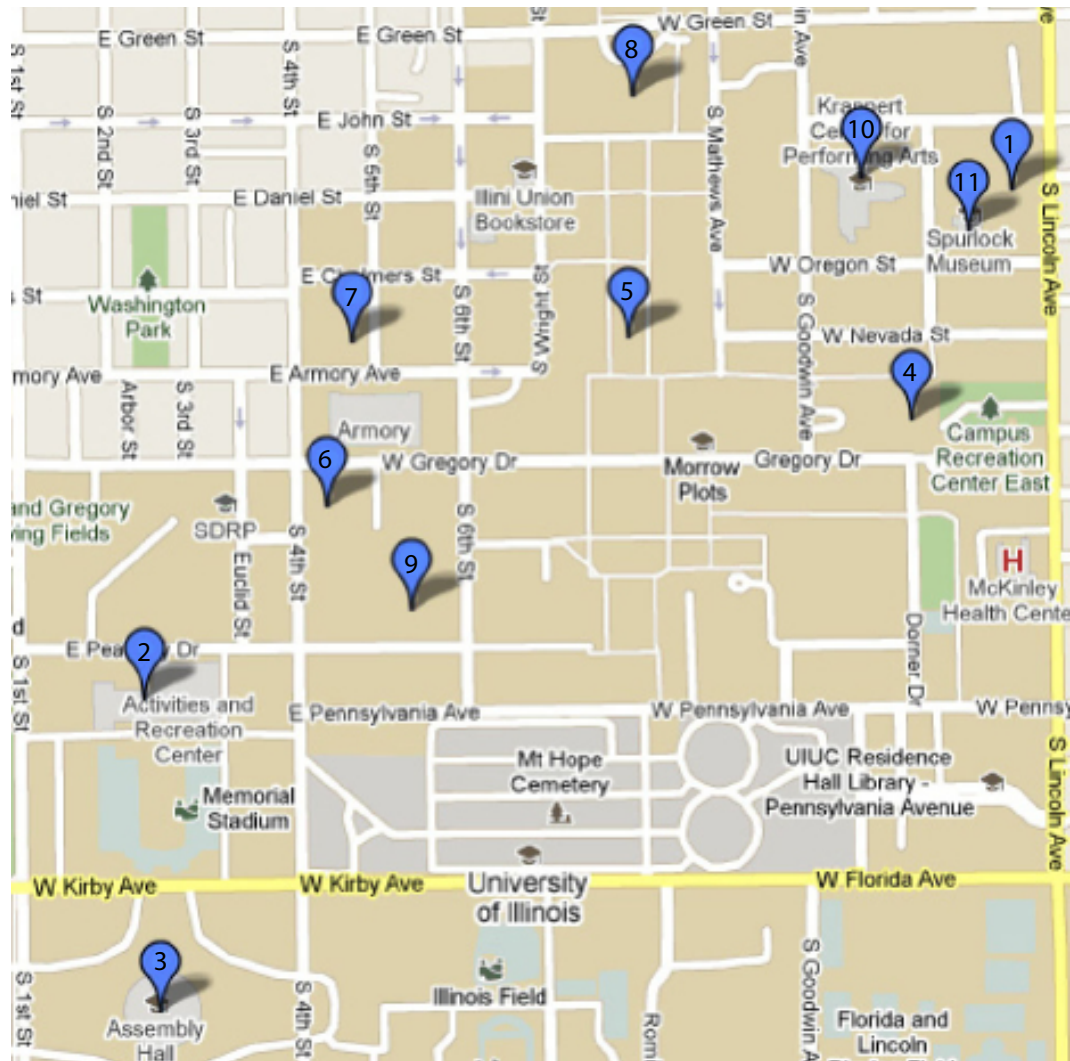
## Introduction:

During the course of the 2009-2010 academic year the Provost's Gender Equity Council at the University of Illinois at Urbana Champaign developed a checklist of public restroom standards. The checklist is to be used by the University's Facilities and Services Department during the renovation of existing buildings and construction of new buildings on the UIUC campus. In the fall of 2010 the GEC set out to assess the current condition and quality of the public restrooms on campus based on the checklist that was developed the year before. The study targeted what the council deemed to be 11 of the most public buildings on campus, the Alice Campbell Alumni Center, the Athletic Recreation Center, Assembly Hall, Campus Recreation Center East, Foellinger Auditorium, George Huff Hall, the Ice Arena, Illini Union, Kranner Art Museum, Krannert Center for the Performing Arts, and the Spurlock Museum. The goal of the study was to assess the facilities with respect to their appropriateness for men, women, families, and the disabled. Using the standards set up in the checklist, the facilities were rated on a scale of bad, better, best. The explanations of these standards can be found on pages 1-6 of this report. Please note throughout this report universal design restroom refers to a restroom that is accessible for people with physical disabilities.

## Table of Contents

Gender Equity Design Checklist - Restrooms	1-6
1_Alumni Center	7-8
2_Athletic Recreation Center (ARC)	9-10
3_Assembly Hall	11-12
4_Campus Recreation Center East (CRCE)	13-14
5_Foellinger Auditorium	15-16
6_George Huff Hall	17-18
7_Ice Arena	19-20
8_Illini Union	21-24
9_Krannert Art Museum	25-26
10_Krannert Center for the Performing Arts	27-30
11_Spurlock Museum	31-32

# Map

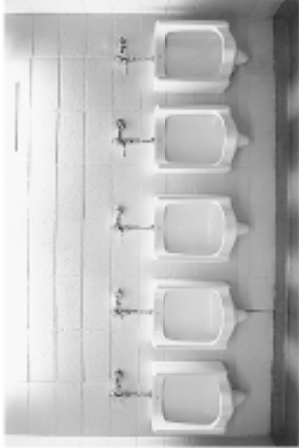


## Conclusion:

	Family Restroom	Unisex Restroom	Partitions (M)	Partitions (W)	Changing Table (M)	Changing Table (W)	Lactation Space	Retractable Child Protection Seat	Step & Wash
Alumni Center	No -	No -	Best +	Best +	Bad -	Bad -	Bad -	No -	No -
ARC	Yes +	Yes +	-	-	Better ●	Better ●	Bad -	No -	No -
Assembly Hall	No -	No -	Bad -	Bad -	Bad -	Better ●	Bad -	No -	No -
CRCE	Yes +	Yes +	-	-	Better ●	Better ●	Bad -	No -	No -
Foellinger	No -	No -	Bad -	Bad -	Bad -	Bad -	Bad -	No -	No -
Huff Hall	No -	Yes +	Better ●	Bad -	Bad -	Bad -	Bad -	No -	No -
Ice Arena	No -	No -	Bad -	Bad -	Better ●	Bad -	Bad -	No -	No -
Illini Union	No -	Yes +	Bad -	Bad -	Bad -	Bad -	Bad -	No -	No -
KAM	No -	No -	Better ●	Bad -	Better ●	Bad -	Bad -	No -	No -
KCPA	No -	Yes +	Better ●	Bad -	Bad -	Better ●	Bad -	No -	No -
Spurlock Museum	No -	No -	Best +	Bad -	Better ●	Better ●	Bad -	No -	No -

# Do Men's Urinals Offer Enough Privacy?

**BAD**



**BETTER**



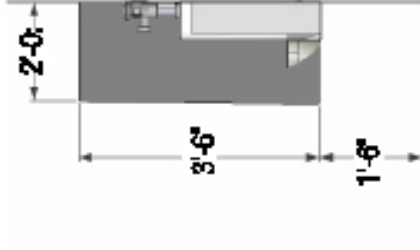
**BEST**



- No partitions between men's urinals can be uncomfortable for some men.
- Adequate space should be provided between urinals. Most men despise trough urinals.
- Partitions are present, but not enough spacing in between urinal stalls.
- Men with shy bladder syndrome and paurens suffer when stalls are too close together.
- + Maximum spacing between urinals and stalls allow for larger men and/or men with bulky outerwear to be accommodated and offer more privacy.



WRIGLEY FIELD TROUGH URINALS



SECTION THROUGH URINAL



SECTION THROUGH INCREASED PRIVACY URINAL

# Gender Equity Design Checklist - Restrooms

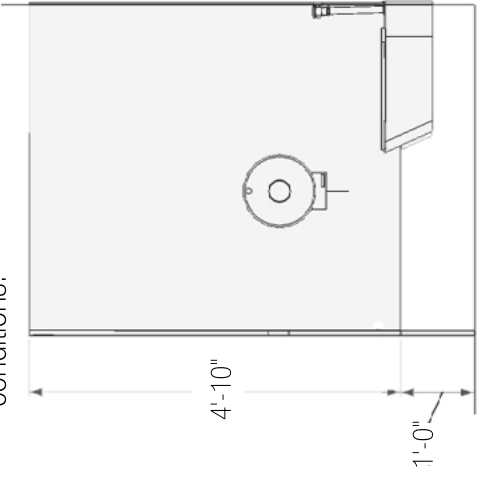
## Do Women's Toilets Offer Enough Privacy?

**BAD**



- Toilet partition distance from ground is too high allowing people to see under stall. Feet and shoes can be identified.

- Women with shy bladder syndrome and pauresis are uncomfortable under these conditions.



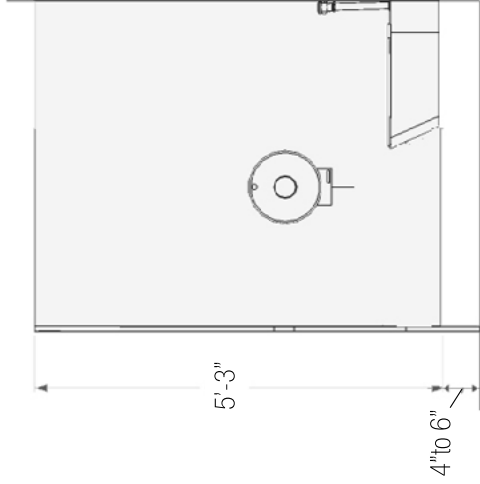
SECTION THROUGH STALL: Standard Dimensions

**BETTER**



• Partitions provided adequate spacing between toilet stalls and proper height for privacy.

- + Total enclosure of stalls with door locks provides maximum visual and auditory privacy.
- + Distance between toilet partitions is wide enough to accommodate larger women and bulky outerwear.



SECTION THROUGH STALL: Increased Privacy

**BEST**



# Gender Equity Design Checklist Are Baby-Changing Spaces Adequate?

BAD



BETTER



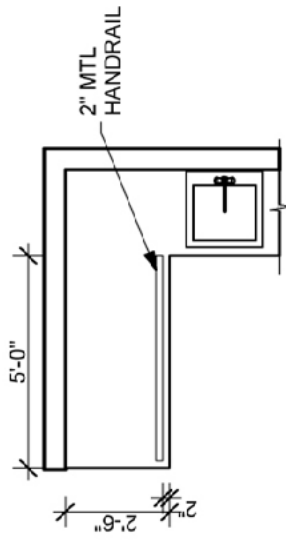
BEST



- Are there baby-changing stations provided in men's and women's restrooms?
- Is baby-changing station located near a sink and/or paper towels?

+ The optimal baby-changing space should provide enough space for baby changing bags and accessories.

+ The location of baby-changing stations should also be convenient for parents with multiple children.

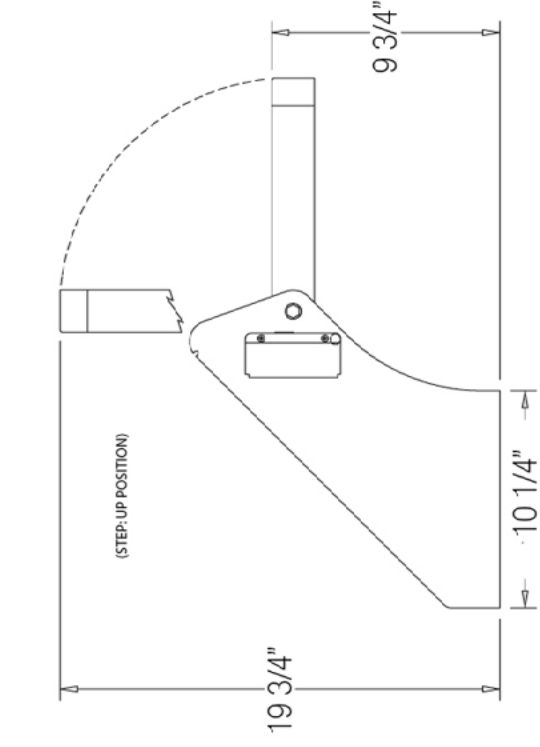


# Gender Equity Design Checklist - Restrooms Are There Adequate Family Restrooms?

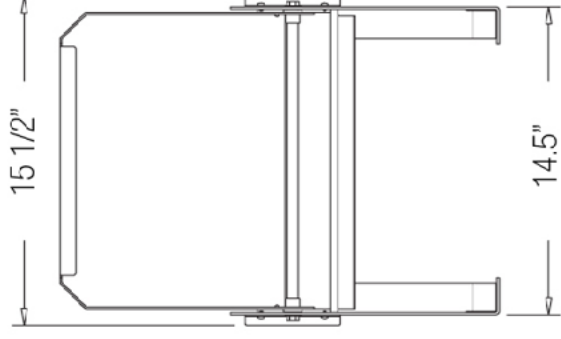
## Solution Detail - Step 'N Wash



STEP 'N WASH STEP



SECTION THROUGH STEP



FRONT VIEW IN UP POSITION

# Gender Equity Design Checklist - Restrooms

## Are There Adequate Family Restrooms?

**BAD**



**BETTER**



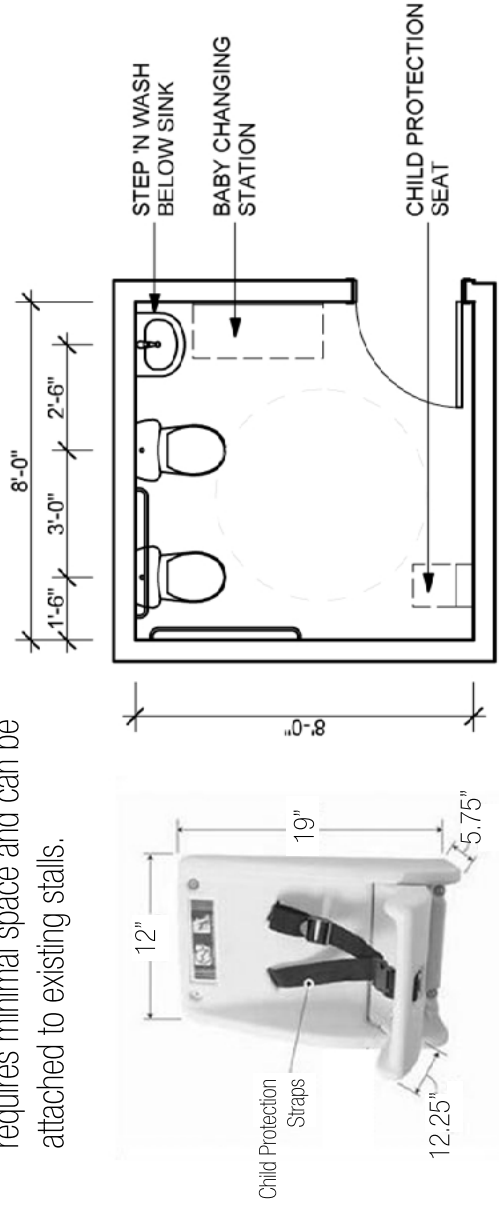
**BEST**



- Older or weaker persons may have difficulty lifting children to reach sinks.
- A possible solution is Step 'N Wash, a self retracting step for public restrooms enabling children to safely and effectively wash their hands without assistance. (See next page detail)

+ Offer both adult and child sized fixtures in a space approx. 8'-0" X 8'-0.

- Men or women with several children and/or baggage can have difficulty finding a place for all their items.
- Retractable child protection seat requires minimal space and can be attached to existing stalls.



CHILD PROTECTION SEAT

FAMILY RESTROOM DUAL TOILETS



# Gender Equity Design Checklist - Lactation Spaces Are There Adequate Lactation Rooms?

BAD



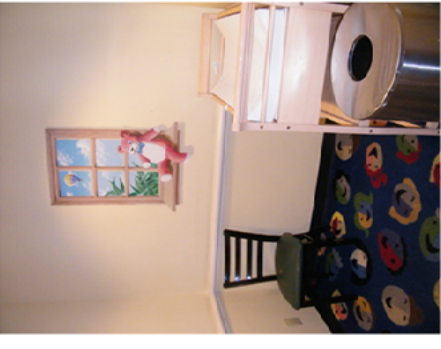
- Does the lactation space meet the legal requirements - other than a toilet stall -- for "reasonable accommodations" for nursing mothers?
- Is the lactation space in a safe, convenient, clean location?

BETTER

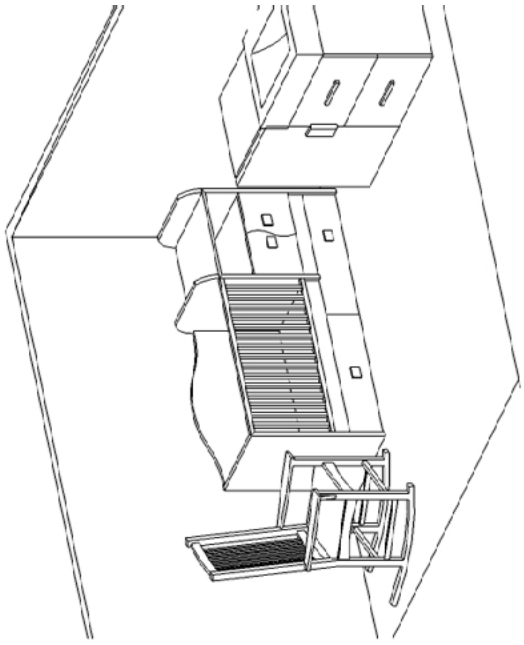


- Are pumps supplied that several mothers can share a room different times of the the day?
- If no lock is available, are there adequate options for privacy such as drawing down blinds?
- Is the lactation space of high enough quality to allow the building to use the designation "infant friendly" or be part of a Working Well Mom's program?

BEST



- The best lactation room should include:
- + a sitting area
  - + a door with private lock
  - + a refrigerator
  - + outlets for breast pumps
  - + a space approx. 7' x 7'



Opened: May 2006  
Architect: BLDD Architects



The Alumni Center  
601 S Lincoln Ave  
Urbana, IL

## Observations

- No Family Restroom
- No Unisex Restroom
- + One Men's Room and One Women's Room located on each floor.
- + Adequate privacy separation between hallway and interior of the bathrooms - no "line of sight" issue

### Main Floor

- Men's room is located at the west end of the building
- Women's room is located at the east end of the building
  - Restroom Signage on the first floor is not permanent and could easily be moved which could lead to confusion for visitors. (Fig. 1)

### Women's Restroom:

- Lactation Space (Bad)  
Lactation space is non-existent and thus does not meet the legal requirements for reasonable accommodations for nursing mothers. There is a small seat where a woman could sit but no privacy.
- + Partitions (Best)  
Total enclosure of stalls with door locks provides maximum visual and auditory privacy. Distance between toilet partitions is wide enough to accommodate larger women and bulky outerwear. (Figure 2)
- Changing Station (Bad)  
No changing station provided. (Fig. 3 & 4)

### 2nd & 3rd Floor Restrooms

- Men's and Women's Restrooms are both located at the east end of the building

### Women's Restroom:

- Lactation Space (Bad)  
Lactation space is non-existent and thus does not meet the legal requirements for reasonable accommodations for nursing mothers.
- Partitions (Better)  
Partitions provide adequate spacing between toilet stalls and proper height (Between 4" to 6" from ground) for privacy
- Changing Station (Better)  
Baby-changing station is located near a sink and paper towels. (Fig. 5)



Figure 1: Restroom Signage on the first floor. Not Permanent



Figure 2: Best stalls in all of the 11 public buildings in the study. Total enclosure with door locks. Women's Restroom at the east end of the building on the Main floor.



Figure 3: This space could potentially be outfitted with a changing station.



Figure 4: Sinks located near potential changing station location in Women's Restroom on the main floor.



Figure 5: Changing Station located near sinks and paper towels in the 2nd floor Women's Bathroom

Most Recent Renovation: 2008  
Currently one of the largest Rec Centers in the country



The Athletic Recreation Center (ARC)  
201 East Peabody Drive  
Champaign, IL

## Observations

+ Family/Unisex locker room/ restroom is located on the concourse level near the pools.

- No unisex bathrooms on the entrance level of the facility  
 - Line of sight issue from the hallway into the main room is compromising for anyone who chooses to change in the main room. (Fig. 1)

+ No line of sight issues for the three smaller rooms located off the locker room.

### The Family/Unisex Lockerroom

- + Appropriate signage (Fig. 2 & 3)
- Consists of a main locker room and 3 smaller rooms off the main room
- 3 smaller rooms consist of 2 large changing rooms with showers (Fig. 4) and changing tables in each and 1 large unisex bathroom (Fig. 5)
- Changing Station (Better)

Changing Station is located in a large separate room that can be closed and locked which makes it convenient for parents with multiple children. It is not located near a sink or paper towels but it is located near a shower.

- Lactation Space (Bad)  
 The shower/changing rooms could potentially serve as lactation rooms but are not designated as such. A chair is located in each that the nursing mother could sit on but rooms are dark, cold, and sterile and lack pumps. Not high enough quality for the building to be designated "infant friendly."
- Private lockers

### Women's Restroom on Entrance Level of the facility

- Lactation Space (Bad)  
 No Lactation Space provided
- Partitions (Bad)  
 Toilet partition distance from the ground is too high allowing people to see under the stall. Feet and shoes can be identified. (Fig. 6)
- Changing Station (Bad)  
 No changing station provided



Figure 1: Door to hallway creates a line of sight issue if anyone were to change in the locker room.



Figure 2: Signage for Gender Neutral Locker Room.



Figure 3: Signage for Gender Neutral Locker Room.



Figure 4: Changing Room off the main locker room area. Includes a shower and a baby changing station.



Figure 5: Unisex Bathroom located inside Gender Neutral Locker Room on concourse level near pools.



Figure 6: Bathroom stalls in the Women's Restroom on entrance level.

Opened: 1963  
Architect: Max Abramovitz



Assembly Hall  
1800 S 1st St  
Champaign, IL

## Observations

- No Family Restrooms
- No Unisex Restroom
- Total of 4 Men's Restrooms and 4 Women's Restrooms in facility
- Facility has not undergone any updating since it was built in 1963

### Men's Restrooms

- + Appropriate signage (Fig. 1)
- Partitions (Bad)
  - No Partitions between men's urinals (Fig. 2)
  - Feet and shoes can be identified.
  - Spacing of stalls seems to be tight. (Fig. 3)
- Changing Station (Bad)
  - Baby-changing station is present adjacent to urinals but is not near sinks or paper towel dispensers. (Fig. 4)



Figure 1: Men's Restroom signage



Figure 5: Women's Restroom signage



Figure 2



Figure 6



Figure 3



Figure 7

### Women's Restroom

- + Appropriate signage (Fig. 5)
- Lactation Space (Bad)
  - Lactation space is non-existent and thus does not meet the legal requirements for reasonable accommodations for nursing mothers.
- Partitions (Bad)
  - Toilet partition distance from the ground is too high allowing people to see under the stall (Figure 6). Feet and shoes can be identified. Spacing of stalls seems to be tight. (Fig. 6 & 7)
- Changing Station (Better)
  - Baby-changing station is located near a sink and paper towels. (Fig. 8)



Figure 4



Figure 8

Opened: Spring 2005



Campus Recreation Center East  
1102 West Gregory Drive  
Urbana, IL



## Observations

- + Family/Unisex locker/restroom is located on entrance level of facility adjacent to indoor pool. (Fig. 1)
- + The Family/Unisex locker/restroom is located on main level and visible as you enter building (Fig. 2)
- + Adequate privacy separation between hallway and interior of bathrooms - no "line of sight" issue

### Family/Unisex locker/restroom

- Consists of a main room (Fig. 3) with a separate unisex universally designed bathroom and 2 shower stalls off of main room.
- Lactation Space (Bad)
  - No designated space for lactation other than the separate family restroom which does not include a chair. (Fig. 4) No pumps supplied. Woman could lock door to family restroom but she would still be using the toilet as her seat. The separate family restroom is safe and clean but it is not a convenient space for a woman to nurse or pump.
- Shower Partitions (Better)
  - Stall partitions for showers do not provide the same degree of privacy that the private shower rooms in the ARC facility afford patrons however they do provide ample space and are the proper height (4" to 6") from the floor for privacy. (Fig. 5)
- two chairs in the main room (Fig. 6)
- has direct access to the indoor pool



Figure 1: Family/Unisex Locker Room located on the main level of the facility off the lobby.



Figure 2: Family Restroom located off main room in the Family/Unisex Locker Room



Figure 3: Main room of the Family/Unisex Locker Room.



Figure 4: Family Restroom is outfitted with a toilet, a sink, a paper towel dispenser, and a changing station.



Figure 5: Large shower stalls with good enclosure.



Figure 6: Chairs located in Locker Room - no lactation space provided.

Opened: 1907  
Architect: Clarence H. Blackall



Foellinger Auditorium  
709 South Matthews Avenue  
Urbana, Illinois

## Observations

- No Family Restrooms
- No Unisex Restroom
- One Men's Restroom located at east end of building down a flight of stairs from the ground level and two flights of stairs from the entrance level of the building.
- One Women's Restroom located at west end of building (same level situation as men's room)
- + Adequate privacy separation between hallway and interior of the bathrooms - no "line of sight" issue
- Seems to be an issue with accessibility in these bathrooms- if there is a unisex or universal design bathroom one would have to be specially directed toward it because no signage exists.

### Men's Restroom

- Partitions (Bad) (Fig. 7)  
No partitions between urinals
- Changing Station (Bad)  
No changing station provided.

### Women's Restroom:

- Lactation Space (Bad)  
Lactation space is non-existent and thus does not meet the legal requirements for reasonable accommodations for nursing mothers.
- Partitions (Bad) (Fig. 8)  
Toilet partition distance from the ground is too high allowing people to see under the stall. Feet and shoes can be identified.
- Changing Station (Bad)  
No changing station provided.



Figure 1



Figure 2



Figure 3



Figure 4



Figure 5



Figure 6

Figure 1-6: Progression from lobby of the Auditorium to the men's and women's restrooms. Patrons must descend a flight of stairs to a ground level entrance to building and continue down a second set of stairs before reaching bathrooms.



Figure 7: Men's Restroom - No partitions between urinals.



Figure 8: Women's Restroom partitions are too close together and the distance from the ground is too high.

Opened: 1925  
Architects: James M. White & Charles A. Platt



George Huff Hall  
1206 S 4th St  
Champaign, IL

# Observations

- No Family Restrooms
- Unisex Restroom located in the southeast corner on the 3rd floor of the building. One would have to know this exists in order to find it - lack of permanent signage indicating bathrooms existence or location
  - One Men's Restroom and one Women's Restroom located on each floor.
  - One Women's Restroom located on second floor of building
  - Building is currently under construction-it is possible that there would be bathrooms in the addition.
- Bathroom directional signage not permanent (Fig. 1)
- + Good privacy separation between hallway and interior of the bathrooms
- + no "line of sight" issues (Fig. 2)

## Men's Restroom:

- Partitions (Better)
  - Partitions are present and deep (extends 2'-6" from wall and goes down to about 10" from the floor) Spacing between partitions seems to be a little cramped. (Fig. 3)
- Changing Station (Bad)
  - No changing station provided.

## Women's Restroom:

- Lactation Space (Bad)
  - Lactation space is non-existent and thus does not meet legal requirements for reasonable accommodations for nursing mothers.
- Partitions (Bad)
  - Toilet partition distance from the ground is too high allowing people to see under the stall. Feet and shoes can be identified. (Figure 4)
- Changing Station (Bad)
  - No changing station provided.

## Unisex Bathroom

+/- The Unisex restroom is large and can be locked. (Fig. 5) It is outfitted with a urinal and a toilet (Fig. 6) but there is not much room for adding any sort of accommodations for nursing mothers. It does not have potential to be the Best Family Restroom but it does have space to accommodate adding a changing station.



Figure 1: Temporary directional signage due to construction.



Figure 2: No "line of sight" issues in women's restroom



Figure 4: First floor women's restroom



Figure 5: Unisex bathroom signage



Figure 6: Interior of unisex bathroom

Figure 3: Partitions between urinals in men's restroom.

Opened: 1931  
Architect: Holabird + Root



The Ice Arena  
406 E Armory Ave  
Champaign, IL

# Observations

- No Family Restrooms
- No Unisex Restroom
- One Men's Room and One Women's Room located near entrance to building
- + Bathrooms are easy to find (Fig. 1)
- + Good privacy separation between hallway and interior of the bathrooms
- + no "line of sight" issues

## Men's Restroom:

- Partitions (Bad)
  - No Partitions between men's urinals (Figure 2)
- Changing Station (Better)
  - Baby-changing station is located near a sink and paper towels. (Figure 3)

## Women's Restroom

- Lactation Space (Bad)
  - Lactation space is non-existent and thus does not meet legal requirements for reasonable accommodations for nursing mothers.
- Partitions (Bad)
  - Toilet partition distance from the ground is too high allowing people to see under the stall. Feet and shoes can be identified. (Figure 4)
- Changing Station (Bad)
  - Located inside the universal design stall changing station is not located near a sink or paper towels (Figure 4)



Figure 1: Bathrooms are easy to find located directly off the lobby.



Figure 4: women's restroom



Figure 2: Urinals in men's restroom

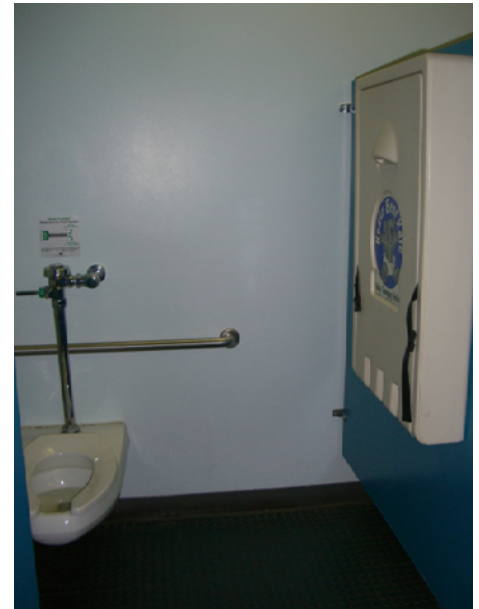


Figure 5: Baby-changing station located inside universal design stall in women's restroom.



Figure 3: Baby-changing station in men's restroom

Opened: November 1st, 1941  
Architects: Ernest L. Stouffer, Howard L. Cheney, and John C. Leavell



The Illini Union  
1401 West Green Street  
Urbana, IL



## Observations

- No Family Restroom
- + Two Unisex Restrooms located on the main floor (Fig. 1)
- Two designated men's restrooms and two designated women's restroom located on main floor
- Two designated Men's Restrooms and Two designated Women's Restrooms located on basement level
- + Excellent privacy separation between hallway and interior of bathrooms on basement level
- + Vestibule separates door from hallway and door into interior of the bathroom

### Main Floor Restrooms:

- + Adequate privacy separation between hallway and interior of the bathrooms on main floor

### Men's Restroom

- Partitions (Bad)
  - No Partitions between men's urinals
- Changing Station (Bad)
  - Located in the vestibule between the bathroom and the hallway - it would be inconvenient to use a changing station that is located in flow of traffic the changing station is not located near a sink or paper towels. (Fig. 2)

### Women's Restroom

- Lactation Space (Bad)
  - Lactation space is non-existent and thus does not meet the legal requirements for reasonable accommodations for nursing mothers.
- Partitions (Bad)
  - Toilet partition distance from the ground is too high allowing people to see under the stall. Feet and shoes can be identified. (Figure 3)

- Changing Station (Bad)
  - Same Situation as Men's Restroom

### Unisex Restrooms

- +/- Would require renovation in order to serve as a Family Restroom. Combining the two Unisex Restrooms into one Family Restroom might be a viable option in order to fit all amenities of a family restroom into the space. (Fig. 4)

### Basement Restrooms:

- + Excellent privacy separation between hallway and interior of bathrooms on Basement Level
- + Vestibule separates door from hallway and door into interior of the bathroom. (Fig. 5)

### Men's Restroom

- Partitions (Bad)
    - No partitions between men's urinals (Fig. 6)
  - Changing Station (Better)
    - Baby-changing station is located near a sink and paper towels.
- ### Women's Restroom
- Lactation Space (Bad)
    - Lactation space is non-existent and thus does not meet the legal requirements for reasonable accommodations for nursing mothers.

- Partitions (Better)
  - Partitions provide adequate spacing between toilet stalls and proper height (Between 4" to 6" from ground) for privacy (Figure 7)
- Changing Station (Better)
  - Baby-changing station is located near a sink and paper towels. (Figure 8)



Figure 1: Unisex restroom signage



Figure 2: Baby-changing station in first floor women's restroom.



Figure 3: Main floor women's restroom.



Figure 4: Unisex restroom outfitted with toilet and urinal - no changing station.



Figure 5: Vestibule between hallway and interior of the restroom in basement women's restroom



Figure 6: Urinals in basement men's restroom



Figure 7: Stalls in basement women's restroom



Figure 8: Baby-changing station in basement women's restroom



Opened: 1961  
Architect: Ambrose Richardson



Krannert Art Museum  
500 East Peabody Drive  
Champaign, IL

## Observations

- No Family Restrooms
- No Unisex Restroom
- One Men's Room and One Women's Room located lower level adjacent to the art gallery. Noise from toilet flushing can be heard inside the gallery.
- + Good privacy separation between hallway and interior of the bathrooms
- + no "line of sight" issues

### Men's Restroom:

- Partitions (Better)  
Partitions are present and deep (extends 2'-6" from wall and goes down to about 10" from the floor) Spacing between partitions seems to be a little cramped. (Fig. 1)
- Changing Station (Better)  
Baby-changing station is located near a sink and paper towels. (Fig. 2)

### Women's Restroom

- Lactation Space (Bad)  
Lactation space is non-existent and thus does not meet the legal requirements for reasonable accommodations for nursing mothers. There is a bench provided in the bathroom but it is old, dirty, and is visible from the hallway if the door to the bathroom is open. (Fig. 3 & 4)
- Partitions (Bad)  
Toilet partition distance from the ground is too high allowing people to see under the stall. Feet and shoes can be identified. Also partition spacing is cramped. (Fig. 5)
- Changing Station (Bad)  
No changing station provided. (Fig. 6)



Figure 1: Urinals in men's restroom



Figure 2: Baby-changing station provided in men's restroom.



Figure 3



Figure 4



Figure 5: Cramped stall space in women's universal design stall.



Figure 6: No baby-changing station located in women's restroom

Opened: 1969  
Architect: Max Abramovitz



Krannert Center For the Performing Arts (KCPA)  
500 South Goodwin Avenue  
Urbana, IL

## Observations

- No Family Restrooms
- Unisex universal design restrooms located on the upper parking level off the parking level lobbies.
- One Men's Room and One Women's Room located on Main Lobby Level.
- One Men's Room and One Women's Room located off of each Lower Level Theater Lobby. (Fig. 1)
  - There is a line of site issue from the hallway into the universonally designed stall in the Men's Restroom on the Main Lobby Level. (Fig. 2)

### Main Lobby Level

#### Men's Restroom

- Partitions (Better)
  - Partitions are present and deep (extends 2'-6" from wall and goes down to about 10" from the floor) (Figure 3)
- Changing Station (Bad)
  - No Changing Station provided.

#### Women's Restroom

- Lactation Space (Bad)
  - Lactation space is non-existent and thus does not meet the legal requirements for reasonable accommodations for nursing mothers.
- Partitions (Bad)
  - Toilet partition distance from the ground is too high allowing people to see under the stall. Feet and shoes can be identified.
- Changing Station (Better)
  - Baby-changing station is located near a sink and paper towels.

### Theater Lobby Levels (Each Theater has a lower lobby)

#### Men's Restrooms

- Partitions (Bad) (Fig. 4)
  - No Partitions between men's urinals.
- Changing Station (Bad)
  - No changing station provided.

#### Women's Restrooms

- Lactation Space (Bad)
  - There is ample space for reapplying makeup but no lactation space. This could be the result of a lack of a need for the space or the result of the facility being outdated. (Fig. 5)
- Partitions (Better)
  - Partitions Provide Adequate spacing between toilet stalls and proper height (Between 4" to 6" from ground) for privacy
- Changing Station (Bad)
  - No changing station provided.

### Parking Lobby Level Unisex Restrooms

- +/- The Unisex restrooms are small but already equipped with changing stations located near a sink and paper towels. They can be locked and have enough room to be outfitted with chairs and pumps to accommodate a nursing mother. They do not have the potential to be the "Best" Family Restrooms but they do have the potential to be "Better."



Figure 1: Signage for the men's and women's restrooms on the main lobby level.



Figure 2: Line of site issue from the hallway into the universal design stall in the men's restroom on the main lobby level.



Figure 3: Urinal partitions in men's restroom on main lobby level



Figure 4: Urinals in men's restrooms on the theatre lobby level



Figure 5: Make-up application areas in women's restrooms on the theatre lobby level



Figure 6: Signage for Unisex Restrooms on the parking lobby level.



Figure 7: 1 of 4 unisex restrooms located off lobby on the upper parking level. 2 of 4 are universally designed.



Figure 8: 2 of 4 of unisex restrooms are outfitted with baby changing stations.





Opened: September 2002



The Spurlock Museum  
600 S. Gregory St.  
Urbana, IL

## Observations

- No Family Restrooms
- No Unisex Restroom
- One Men's Room and One Women's Room located on first floor near the main entrance.
- + Good directional signage makes it easy to find the restrooms (Fig. 1)

### Men's Restroom:

- + Partitions (Best)
  - Partitions are present and deep (extends 2'-6" from wall and goes down to about 10" from the floor) Spacing between urinals and stalls allow for larger men and/or men with bulky outerwear to be accommodated and offer more privacy. (Fig. 2)
- Changing Station (Bad) (Fig. 3)
  - No changing station provided.

### Women's Restroom

- Lactation Space (Bad)
  - Lactation space is non-existent and thus does not meet the legal requirements for reasonable accommodations for nursing mothers.
- Partitions (Bad)
  - Toilet partition distance from the ground is too high, according to the GEC checklist, allowing people to see under the stall. Feet and shoes can be identified. (Fig. 4)
- Changing Station (Better)
  - Baby-changing station is located near a sink and paper towels. (Fig. 5 & 6)



Figure 1: Directional Signage



Figure 2: Men's restroom partitions are present, deep, and have adequate spacing.



Figure 3: Sinks in the men's restroom. There is enough space on the wall left of the sinks to provide a baby changing station.



Figure 4: Women's restroom partition distance from the ground is too high. There is an adequate number of partitions for the size and function of the facility and they are well spaced.

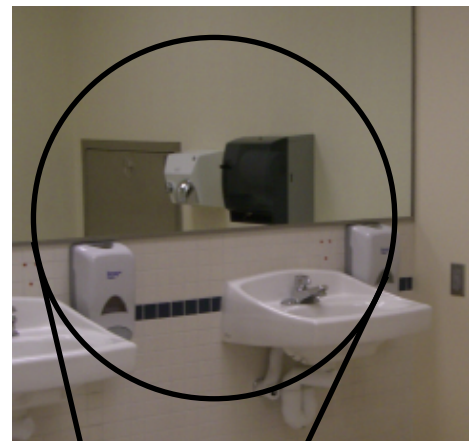


Figure 5 & 6: Changing station in women's restroom is located near the sinks and a paper towel dispenser.